

AtomicFE QuickStart Guide

So, you've heard about MAME, got a bunch of ROMs, and need a front end fast? AtomicFE to the rescue!

Step 1

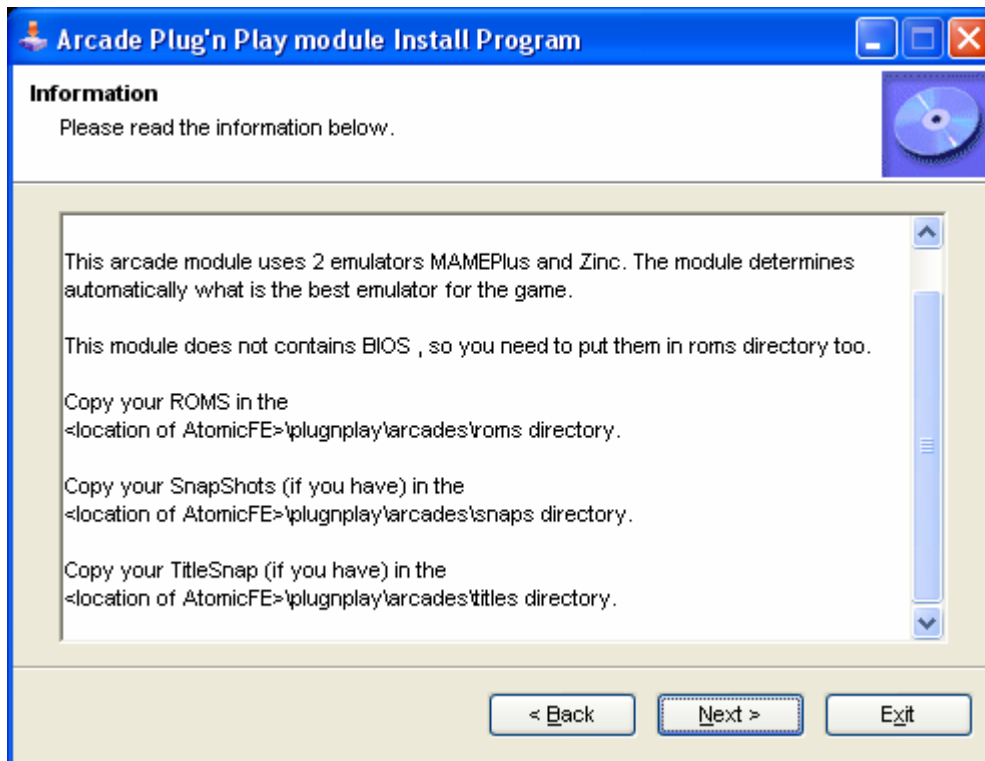
Download a copy of AtomicFE: <http://atomicfe.com/EN2/download.php>
Install AtomicFE – accept all defaults.

Step 2

Download a Plug and Play module: <http://atomicfe.com/EN2/modulepnp.php>
(For the purposes of this guide, we will use the Arcade module)

Step 3

Run the Module installation. Actually READ the information screen: it will tell you about the module, where to copy any necessary support files, and any other needed information:



Step 4

Copy your ROM files to <AtomicFE Dir>\PlugnPlay\Arcades_Simple\Roms
Copy your Snapshots to <AtomicFE Dir>\PlugnPlay\Arcades_Simple\Snaps
Copy your TitleSnaps to <AtomicFE Dir>\PlugnPlay\Arcades_Simple\Titles

Step 5

Run AtomicFE (<AtomicFE Dir>\Atomic.exe) and enjoy!